

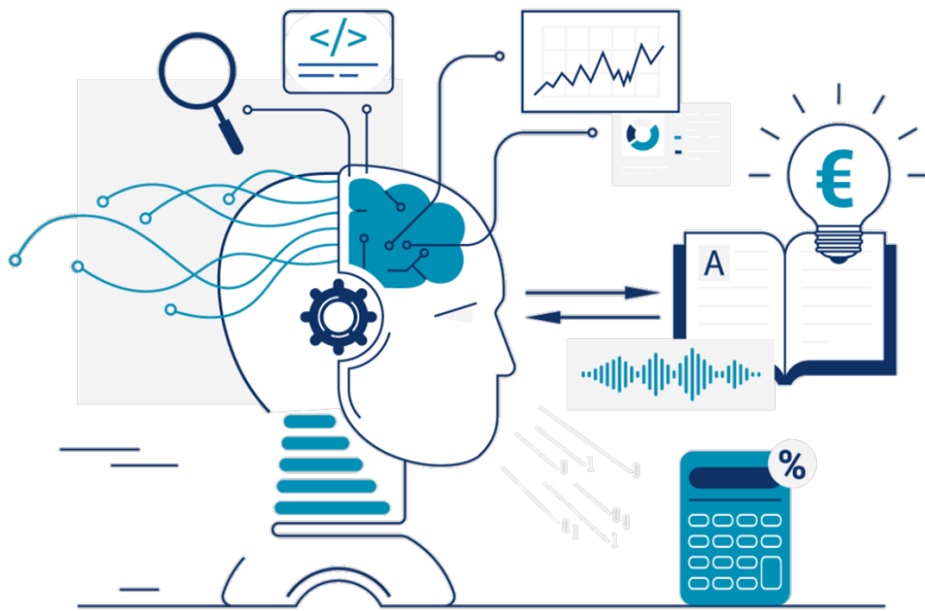


COMPETITION

«MANAGE YOUR FINANCES SMARTLY,
BUILD YOUR FUTURE WISELY»

EXAM (2025)

GENERAL INSTRUCTIONS



NAME:

SURNAME:

ID NUMBER:

GENERAL INSTRUCTIONS

✓ **Structure:**

- The exam consists of 40 questions.
- The exam is divided into two topics: 30 questions on economics and 10 questions on finance.
- Total test duration: 90 minutes.

✓ All answers must be transferred to the ANSWER SHEET, provided separately from the exam questions.

✓ Only a simple (non-programmable) pocket calculator is allowed.

✓ A dictionary for word translation is permitted, but it must be clean, without notes or extra sheets, and will be checked by an invigilator.

✓ **Answer Sheet:**

- Select only ONE answer for each question.
- FILL in the entire CIRCLE of the correct answer using a BLUE pen.
 - Example: Correct answer is B



- If you make a MISTAKE:
 - Fill in the entire square of the incorrect answer and then fill in the circle of the correct answer.
 - Example: Correct answer is D



- **Attention:** Make sure to completely fill in the circles and squares as instructed above. Incomplete or unclear marks may affect the grading process. AVOID ticks (✓), crosses (X), or partial shading to ensure your answers are correctly recorded.

✓ **Grading:**

- Correct answer: +4 points
- Incorrect answer: -1 point (deduction)
- Unanswered question: No impact on the score

Important Rules:

Tearing or removing any part of the exam paper or answer sheet is **strictly prohibited**.

Copying or reproducing any part of the exam, including questions and answers, is **strictly prohibited** without prior written permission from the competition organising committee.

Name and Surname | Όνοματεπώνυμο:

ID | Α.Π.Τ.: _____

- Mark your answer by fully shading the corresponding circle. | Σκιάστε πλήρως τον κύκλο της σωστής απάντησης.
- If you make a mistake, shade the entire square of the incorrect answer, then fill in the correct circle. | Εάν κάνετε λάθος, σκιάστε ολόκληρο το τετράγωνο της λανθασμένης απάντησης και μετά τον σωστό κύκλο.

Example: marked answer is B



Example: marked answer is D

Παράδειγμα: Σωστή απάντηση το Β

Παράδειγμα: Σωστή απάντηση το D



scanning zone

			
1	<input type="radio"/> A <input type="radio"/> B <input type="radio"/> C <input type="radio"/> D	21	<input type="radio"/> A <input type="radio"/> B <input type="radio"/> C <input type="radio"/> D
2	<input type="radio"/> A <input type="radio"/> B <input type="radio"/> C <input type="radio"/> D	22	<input type="radio"/> A <input type="radio"/> B <input type="radio"/> C <input type="radio"/> D
3	<input type="radio"/> A <input type="radio"/> B <input type="radio"/> C <input type="radio"/> D	23	<input type="radio"/> A <input type="radio"/> B <input type="radio"/> C <input type="radio"/> D
4	<input type="radio"/> A <input type="radio"/> B <input type="radio"/> C <input type="radio"/> D	24	<input type="radio"/> A <input type="radio"/> B <input type="radio"/> C <input type="radio"/> D
5	<input type="radio"/> A <input type="radio"/> B <input type="radio"/> C <input type="radio"/> D	25	<input type="radio"/> A <input type="radio"/> B <input type="radio"/> C <input type="radio"/> D
6	<input type="radio"/> A <input type="radio"/> B <input type="radio"/> C <input type="radio"/> D	26	<input type="radio"/> A <input type="radio"/> B <input type="radio"/> C <input type="radio"/> D
7	<input type="radio"/> A <input type="radio"/> B <input type="radio"/> C <input type="radio"/> D	27	<input type="radio"/> A <input type="radio"/> B <input type="radio"/> C <input type="radio"/> D
8	<input type="radio"/> A <input type="radio"/> B <input type="radio"/> C <input type="radio"/> D	28	<input type="radio"/> A <input type="radio"/> B <input type="radio"/> C <input type="radio"/> D
9	<input type="radio"/> A <input type="radio"/> B <input type="radio"/> C <input type="radio"/> D	29	<input type="radio"/> A <input type="radio"/> B <input type="radio"/> C <input type="radio"/> D
10	<input type="radio"/> A <input type="radio"/> B <input type="radio"/> C <input type="radio"/> D	30	<input type="radio"/> A <input type="radio"/> B <input type="radio"/> C <input type="radio"/> D
11	<input type="radio"/> A <input type="radio"/> B <input type="radio"/> C <input type="radio"/> D	31	<input type="radio"/> A <input type="radio"/> B <input type="radio"/> C <input type="radio"/> D
12	<input type="radio"/> A <input type="radio"/> B <input type="radio"/> C <input type="radio"/> D	32	<input type="radio"/> A <input type="radio"/> B <input type="radio"/> C <input type="radio"/> D
13	<input type="radio"/> A <input type="radio"/> B <input type="radio"/> C <input type="radio"/> D	33	<input type="radio"/> A <input type="radio"/> B <input type="radio"/> C <input type="radio"/> D
14	<input type="radio"/> A <input type="radio"/> B <input type="radio"/> C <input type="radio"/> D	34	<input type="radio"/> A <input type="radio"/> B <input type="radio"/> C <input type="radio"/> D
15	<input type="radio"/> A <input type="radio"/> B <input type="radio"/> C <input type="radio"/> D	35	<input type="radio"/> A <input type="radio"/> B <input type="radio"/> C <input type="radio"/> D
16	<input type="radio"/> A <input type="radio"/> B <input type="radio"/> C <input type="radio"/> D	36	<input type="radio"/> A <input type="radio"/> B <input type="radio"/> C <input type="radio"/> D
17	<input type="radio"/> A <input type="radio"/> B <input type="radio"/> C <input type="radio"/> D	37	<input type="radio"/> A <input type="radio"/> B <input type="radio"/> C <input type="radio"/> D
18	<input type="radio"/> A <input type="radio"/> B <input type="radio"/> C <input type="radio"/> D	38	<input type="radio"/> A <input type="radio"/> B <input type="radio"/> C <input type="radio"/> D
19	<input type="radio"/> A <input type="radio"/> B <input type="radio"/> C <input type="radio"/> D	39	<input type="radio"/> A <input type="radio"/> B <input type="radio"/> C <input type="radio"/> D
20	<input type="radio"/> A <input type="radio"/> B <input type="radio"/> C <input type="radio"/> D	40	<input type="radio"/> A <input type="radio"/> B <input type="radio"/> C <input type="radio"/> D
